

Clarkson University 16th International Symposium on Chemical-Mechanical Planarization



**CENTER FOR ADVANCED
MATERIALS PROCESSING**

at

Clarkson University

announces

**16th International Symposium
on
Chemical-Mechanical
Planarization**

August 7 -10, 2011

*Crowne Plaza Resort
& Golf Club
Lake Placid, NY*

*For further information
including registration and final
program contact:*

*Ms. Leila Boyea
Center for Advanced Materials
Processing
Clarkson University
350 CAMP Bldg.
Clarkson University
Potsdam, NY 13699-5665
Phone: (315) 268-2336
Fax: (315) 268-7615
E-mail: leila@clarkson.edu
Webstite:
www.clarkson.edu/CAMP*

About CAMP

The Center for Advanced Materials Processing (CAMP) at Clarkson University is dedicated to developing Clarkson's research and education programs in high-technology materials processing. As one of the Centers for Advanced Technology (CATs) at New York State Universities, CAMP receives support from the New York State Office of Science Technology & Academic Research (NYSTAR) for research and operating expenses. In addition, CAMP-related work receives several million dollars each year from the federal government and private industry. CAMP's research is focused on colloids and surfaces; in particular, on the production, modification and conversion of solids for which small particles, colloidal media or surfaces play an important role in the processing or the properties of the final product.

NOTE! *August is prime summertime in Lake Placid: We will have 60 rooms reserved until July 25. So, please make your reservations early. We must release any unused rooms in our block by July 25.*

CMP Symposium

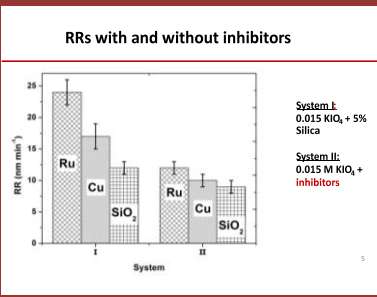
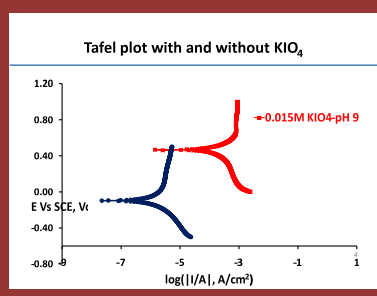
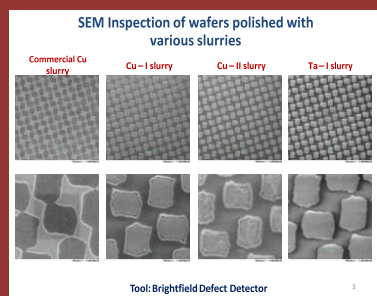
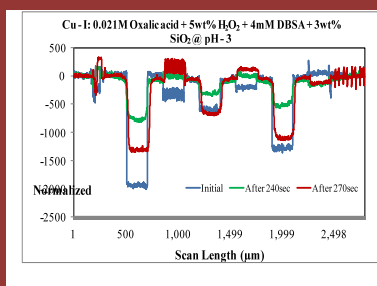
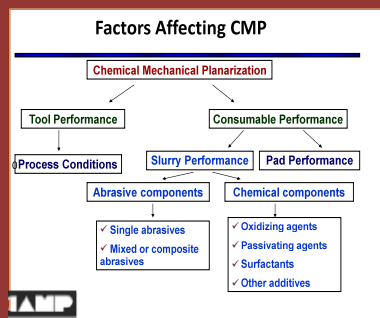
*August 7 -10, 2011
Crowne Plaza Resort Hotel & Golf club
Lake Placid, New York*

Co-chairs:

*S. V. Babu, Clarkson University
Manabu Tsujimura, EBARA
Jin-goo Park, Hanyang University
Donald Canaperi, IBM
Joseph Steigerwald, Intel
Matt Prince, Intel
Lee Cook, Dow Electronic Materials
Anurag Jindal, Micron*

Chemical-mechanical planarization has come to occupy a central role in many industrially important technologies. This workshop, to be held in a Gordon conference type format, will focus on several fundamental aspects of chemical-mechanical planarization including:

- *particle and colloidal aspects*
- *polishing mechanisms*
- *pad/conditioning behavior*
- *flow characterization*
- *Cu/barrier film planarization*
- *STI, Nitride/Poly, etc. polishing*
- *defects and post-polish cleaning*
- *low-k films and integration issues*
- *300 mm wafer issues*
- **MEMS/MOEMS**



Invited Speakers from End users, Tool, Pad and Slurry manufacturers, and Universities will present their recent research results. As has been the practice in recent years, a poster session will be organized on the afternoon of August 8, 2011.

Details will be posted on the bulletin board at www.clarkson.edu/CAMP as soon as they are available.



Directions to the Crown Plaza Resort

From Albany take I-87 North toward Saratoga Springs/Glens Falls (98.5 miles). Take the US-9 exit, Exit 30, toward RT-73/Keene Valley/Keene (0.2 miles), then turn Left onto US-9 N (2.2 mi), turn Slight Left onto NY-73 N (27.6 mi). Turn Left onto NY-86/Main St. (0.4 mi), turn Left onto Olympic Dr. (0.1 mi) and End at 101 Olympic Dr Lake Placid, NY 12946 (Estimated Time: 2.0 hours 28 minutes).

From Boston/Springfield/Hartford take I-90 W (Portions toll) (Crossing into NEW YORK) (151.3 mi), Merge onto I-90 W via Exit B1 toward RT-9/Albany/Hudson (Portions toll) (14.0 mi). Merge onto I-787 N toward Troy (5.8 mi), take NY-7 W via Exit 9W toward Schenectady/I-87/Saratoga Springs (3.6 mi), Merge onto I-87 N toward Saratoga Springs/Glens Falls (98.5 mi), Take the US-9 exit, Exit 30, toward RT-73/Keene Valley/Keene (0.2 mi). Follow above directions from Albany (Estimated Time: 5.0 hours 10 minutes Estimated Distance: 304.62 miles).

From Montreal take Autoroute 15 South via the ramp on the Left toward AUT-15 S/RTE-132 O/LA PRAIRIE (Crossing into *US* NY) (33.2 mi). Autoroute 15 S connects with I-87 S (37.5 mi), take the RT-9N exit, EXIT 34, toward Ausable Forks/Keeseville (0.3 mi), Turn Left onto NY-9N (10.3 mi), Turn Left to stay on NY-9N (0.3 mi), Turn Right to stay on NY-9N (5.7 mi) Turn Right onto NY-86 (5.1 mi) Turn Left to stay on NY-86 (12.5 mi) Turn Left onto OLYMPIC DR. (0.1 mi), End at 101 Olympic Dr Lake Placid, NY 12946 (Estimated Time: 2.0 hours 10 minutes Estimated Distance: 112.28 miles)